



Directions

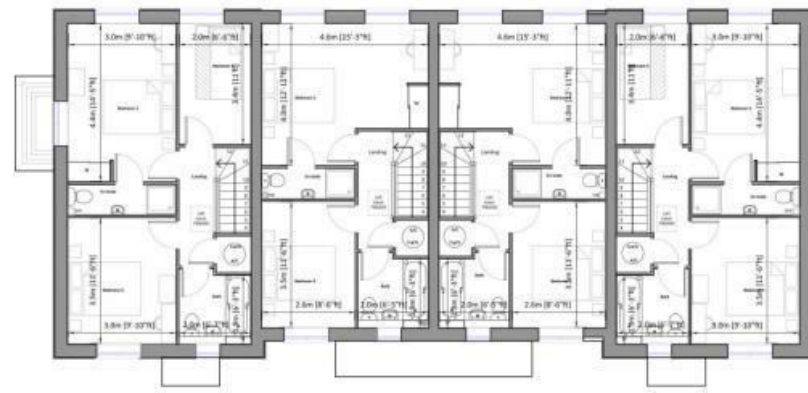
Viewings

Viewings by arrangement only. Call 01825 701 030 to make an appointment.

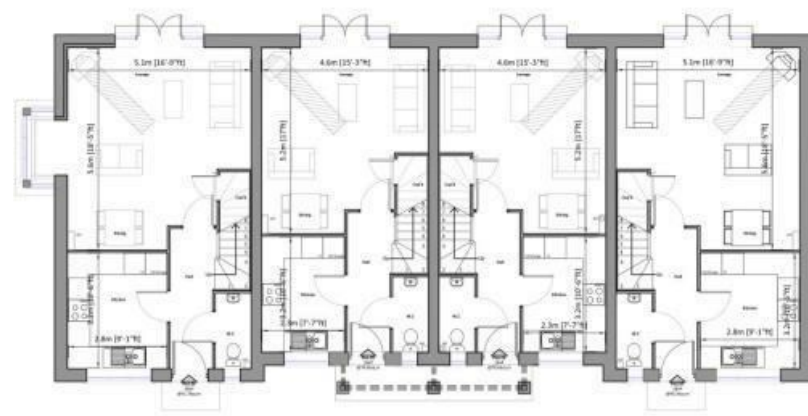
EPC Rating

C

Energy Efficiency Rating		Current	Potential
Very energy efficient - lower running costs			
(92 plus) A			
(81-91) B			
(69-80) C		78	78
(55-68) D			
(39-54) E			
(21-38) F			
(1-20) G			
Not energy efficient - higher running costs			
England & Wales		EU Directive 2002/91/EC	



First Floor Plan
Plan 04/07



Ground Floor Plan
Plan 04/07



7 Old Forge Close, Upper Dicker, Hailsham, East Sussex, BN27 3YJ

£1,400 Per month

- Modern Two Bedroom House
- Popular Upper Dicker
- Solar Panels for Energy Generation
- Private Rear Garden
- Available Immediately, Long Term
- Mid Terrace
- Close to Schools and Mainline Railway Station
- Good Size Accommodation
- Allocated Parking
- EPC C - 78

7 Old Forge Close, Hailsham BN27 3YJ

A very well presented modern two bedroom mid terrace house located in the popular village of Upper Dicker.

The property was only constructed 8 years ago to an extremely high specification to include solar panels and a high energy performance. The well appointed accommodation comprises large sitting room/dining room, stylish kitchen with fitted appliances, downstairs cloakroom/WC. Upstairs there are two double bedrooms with an ensuite shower room to the master bedroom and a family bathroom. Outside there is an enclosed rear garden laid to lawn and allocated parking. The property benefits from UPVC double glazing, photovoltaic roof panels to generate electricity and a high level of insulation. Available immediately, unfurnished.



Council Tax Band: D

